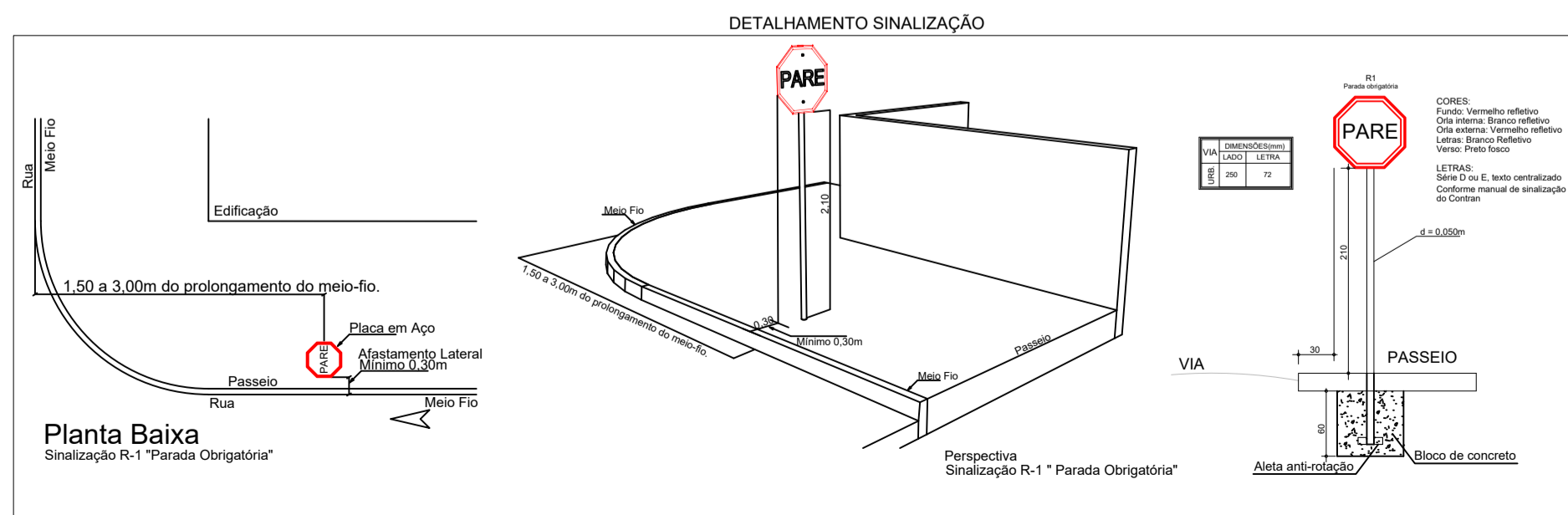
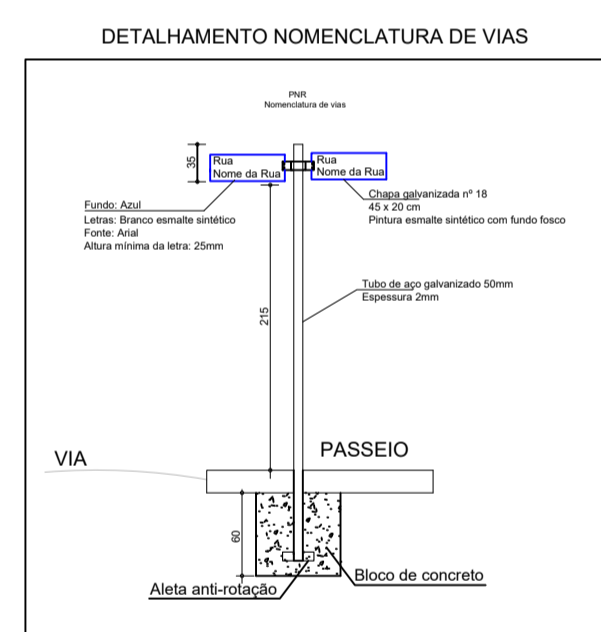
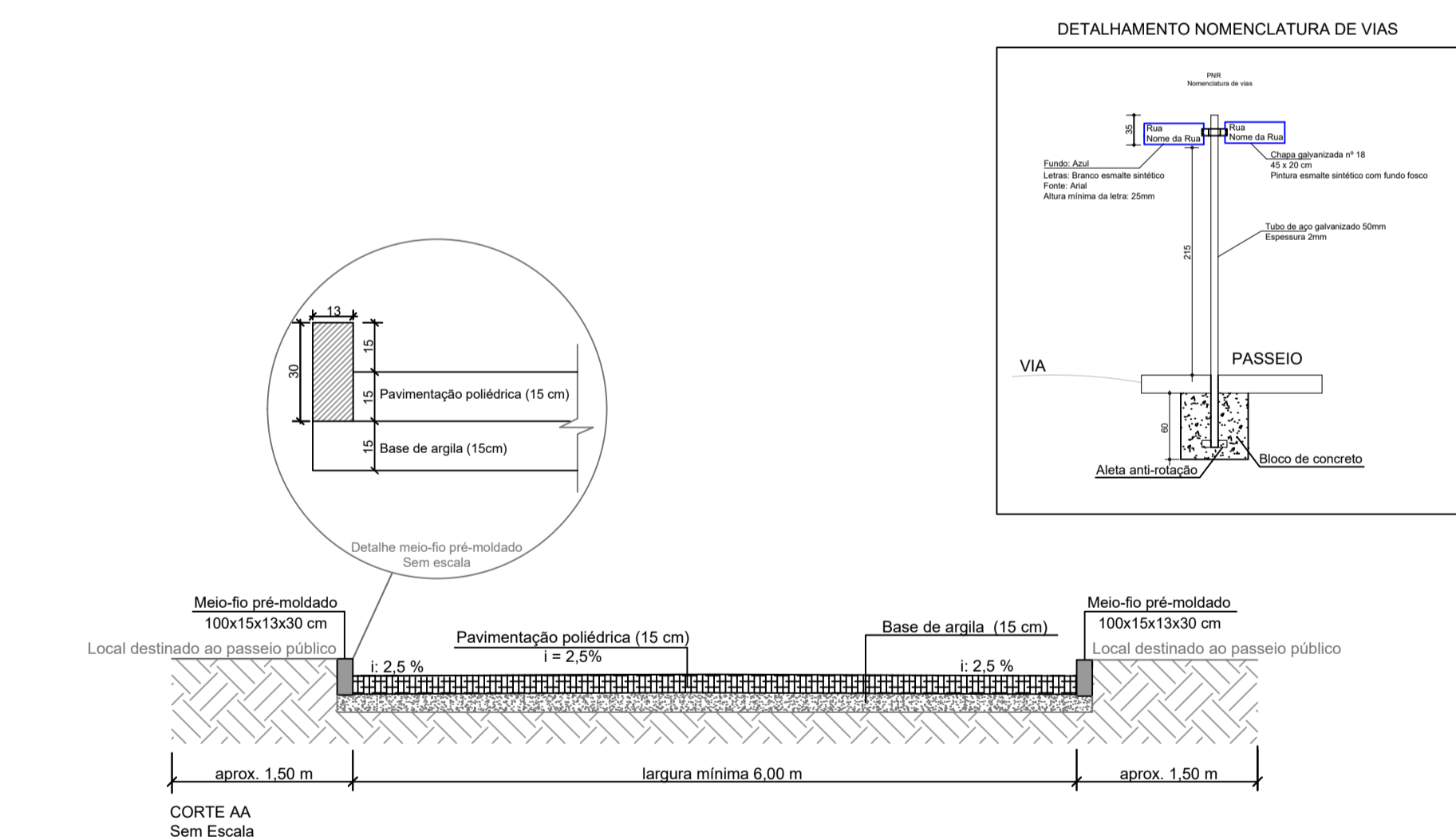
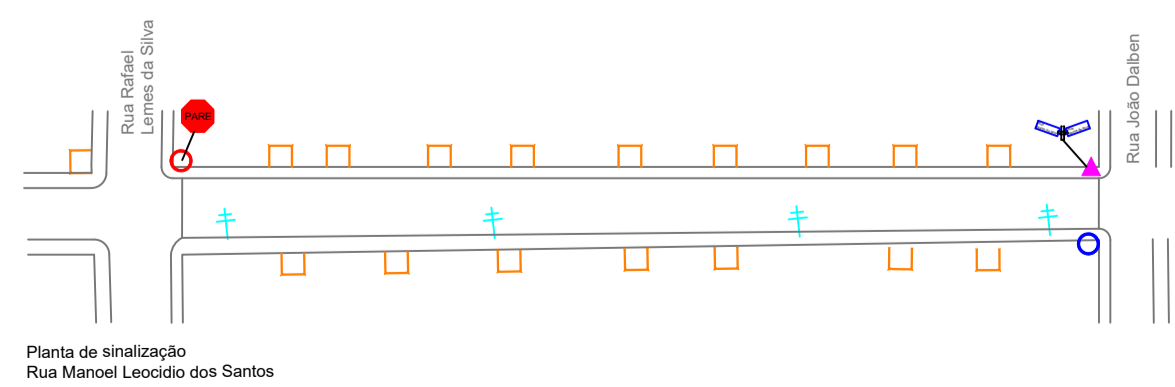
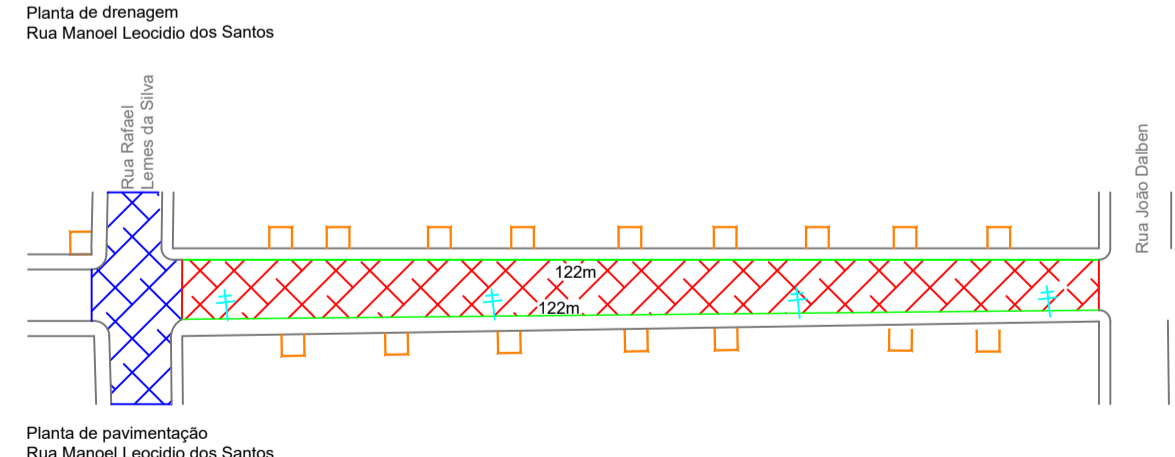
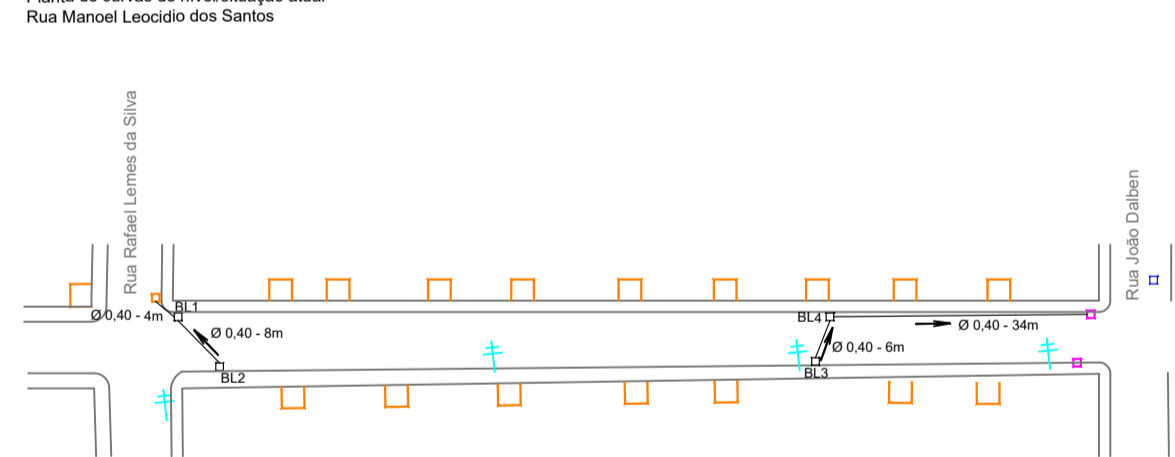
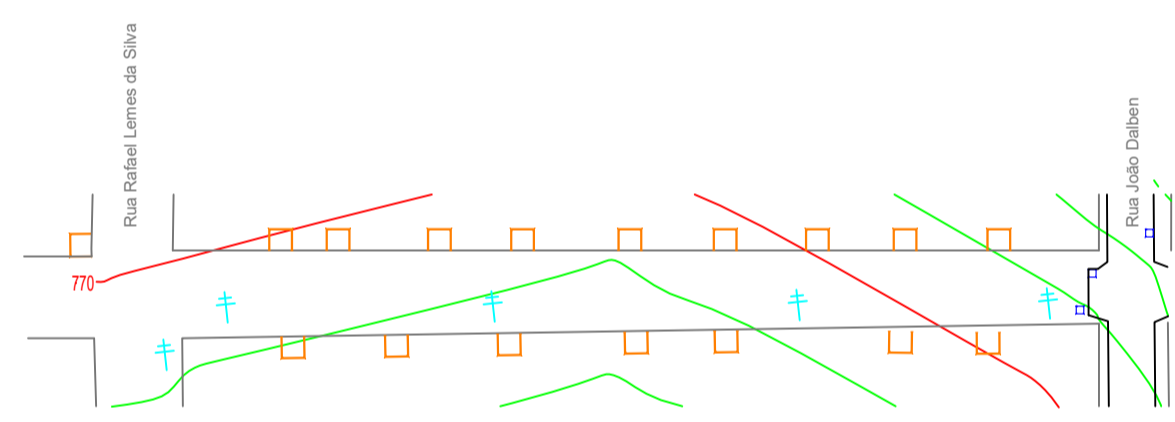
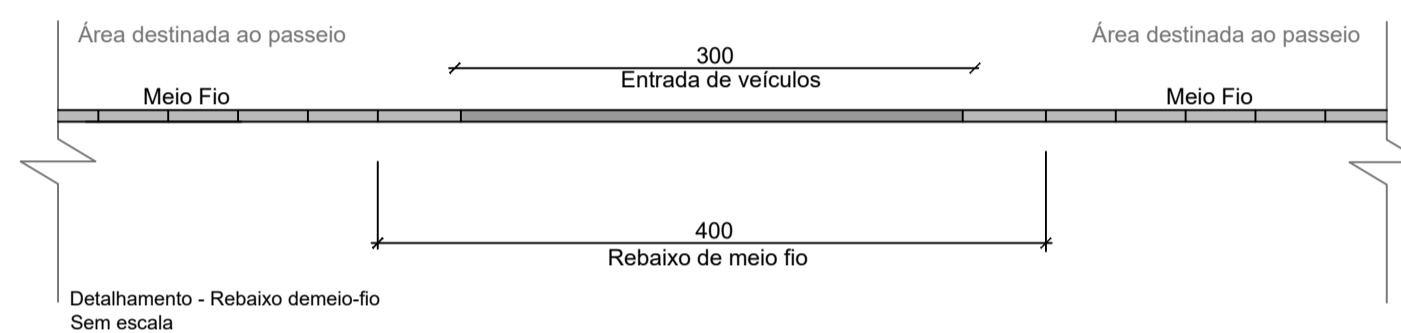
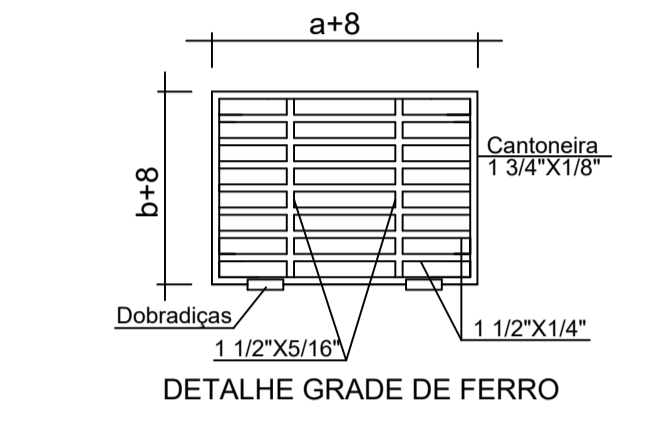


Dimensões da tampa				
D(cm)	a(cm)	b(cm)	A(cm)	B(cm)
40, 60, 80	50	70	90	110

Dimensões da boca				
D(cm)	c(cm)	d(cm)	C(cm)	D(cm)
40	50	70	90	110
60	70	70	110	110
80	90	90	130	130

Nota: Para os tubos de 40cm, as bocas de lobo terão dimensões mínimas de 90x110cm.



QUANTITATIVOS	
Boca de lobo	4 unidades
Tubo de concreto simples Ø400mm	52,00 m
Pavimentação poliédrica	882,23 m ²
Meio-fio pré-moldado (100x15x13x30cm) à executar	244,00 m

NOTA:
Deve ser respeitada a largura mínima da pista de rolamento de 6m, e de passeios de 1,5m.



OBRA: PAVIMENTAÇÃO POLIÉDRICA Rua Rafael Lemes da Silva - Abelardo Luz/SC			
PROPRIETÁRIO: MUNICÍPIO DE ABELARDO LUZ CNPJ: 83.009.886/0001-61	ESCALA: Horizontal: 1/1000 Vertical: 1/200	DATA: 02/2022	FRANCHA: 02/04
RESP. LEVANTAMENTO: MAICON GENTIL POLESE ENGENHEIRO FLORESTAL - CREA/SC: 156616-5	RESP. TÉCNICO: AMANDA CUNICO CARNEIRO ENGENHEIRA CIVIL - CREA/SC: 163289-6		