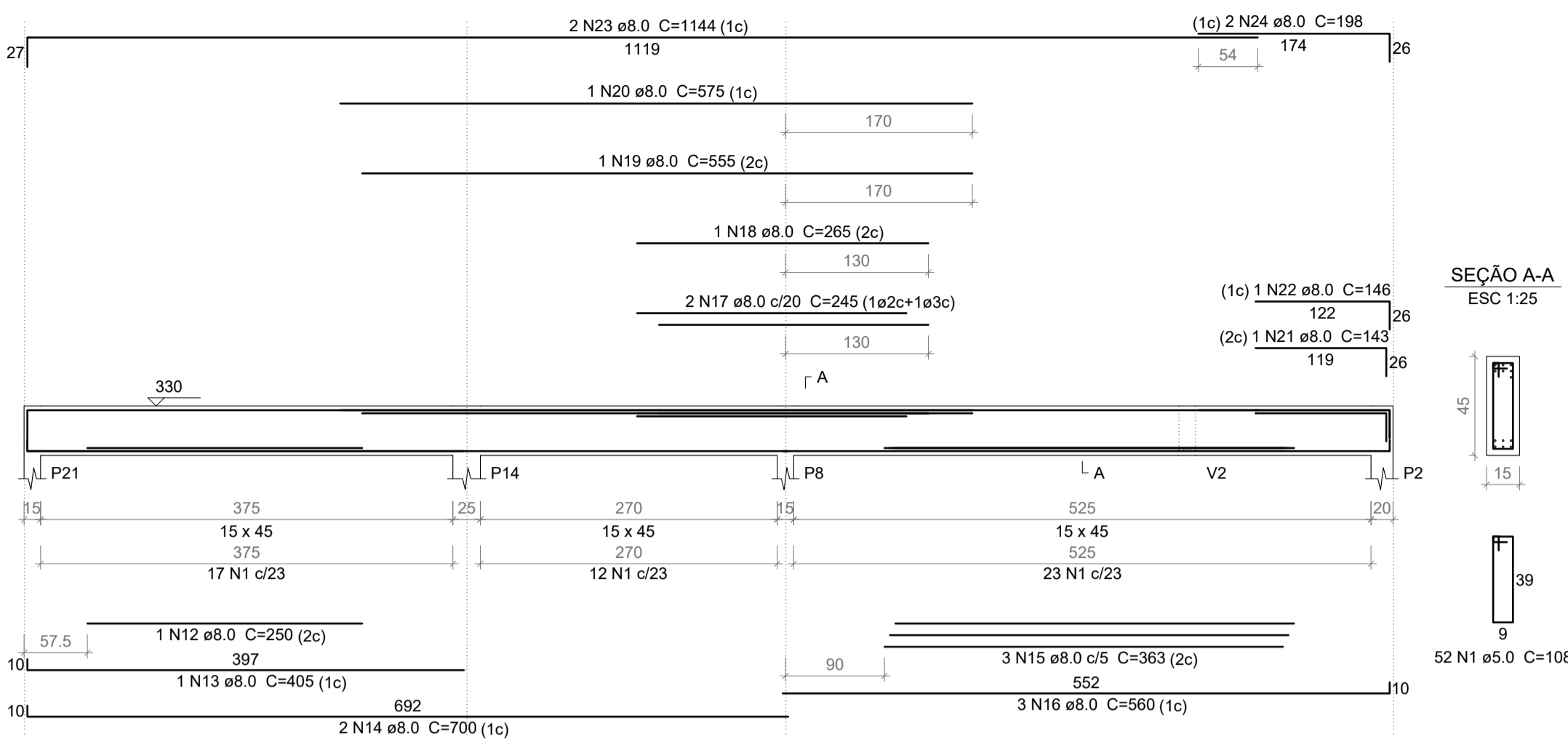
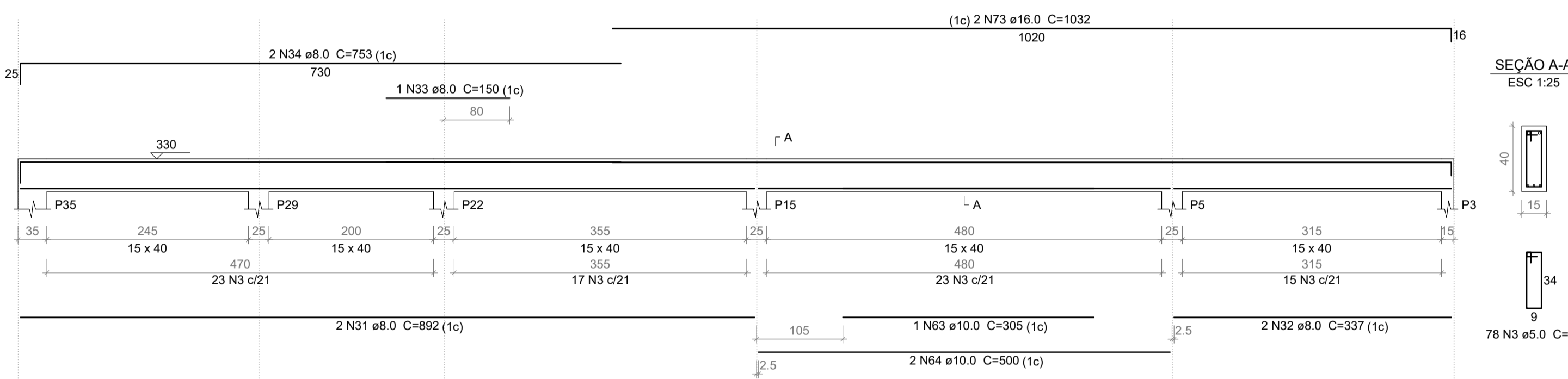


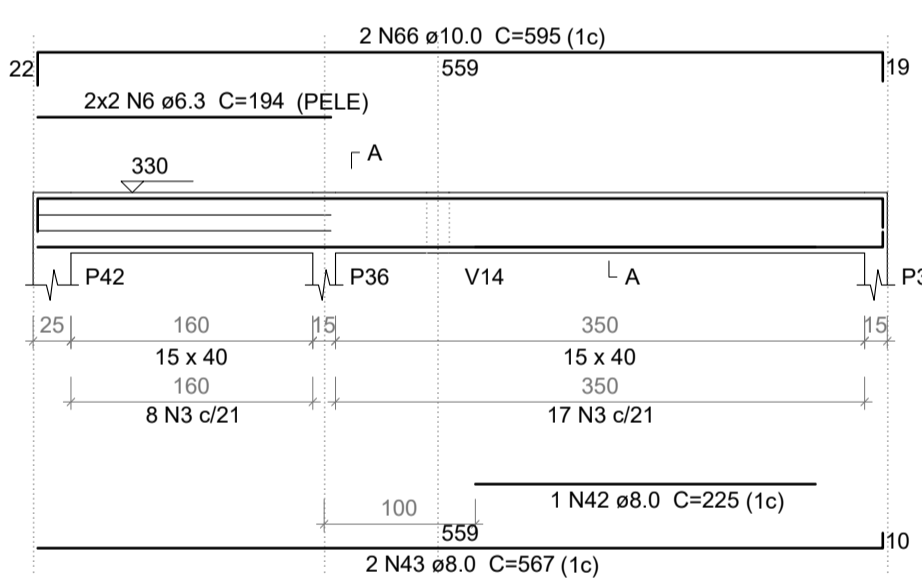
V27
ESC 1:50



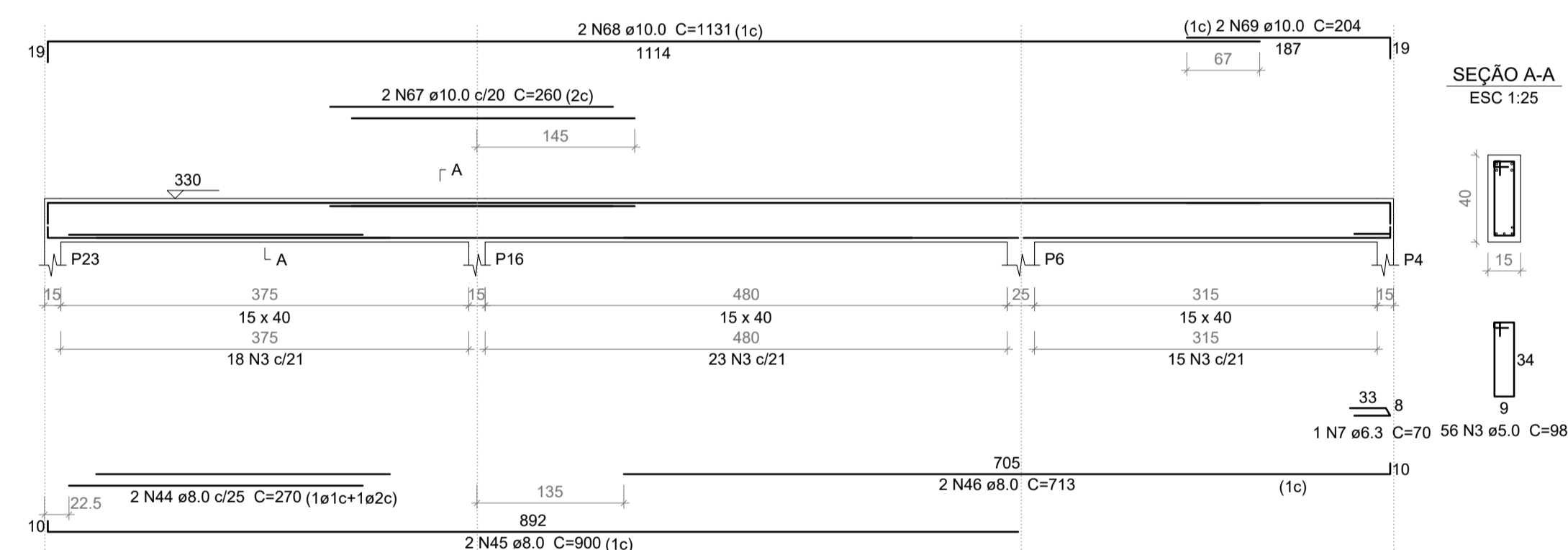
V30
ESC 1:50



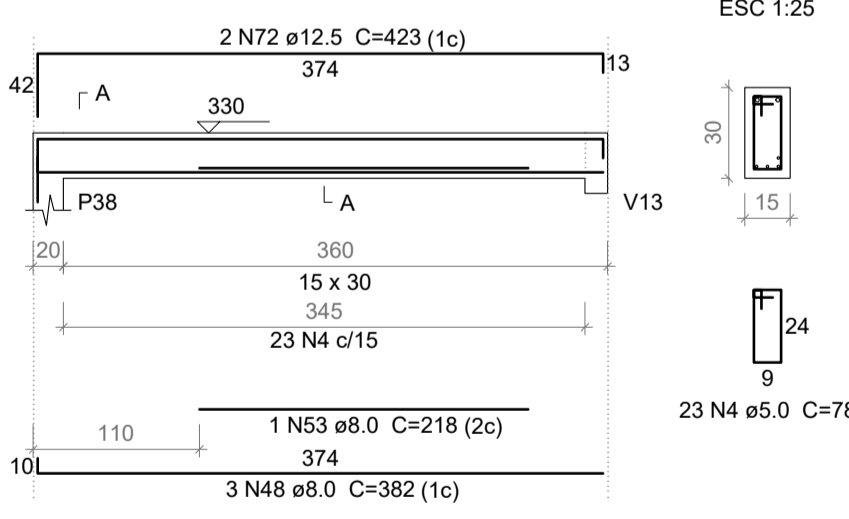
V34
ESC 1:50



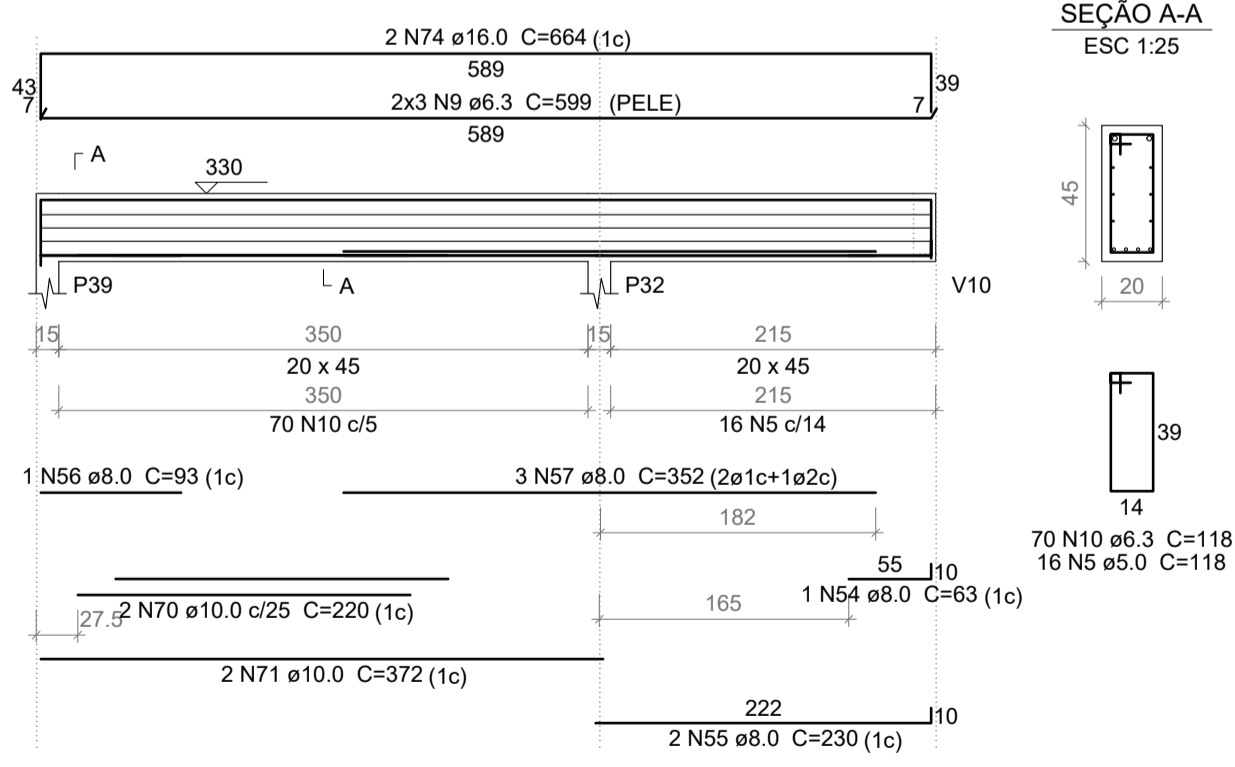
V35
ESC 1:50



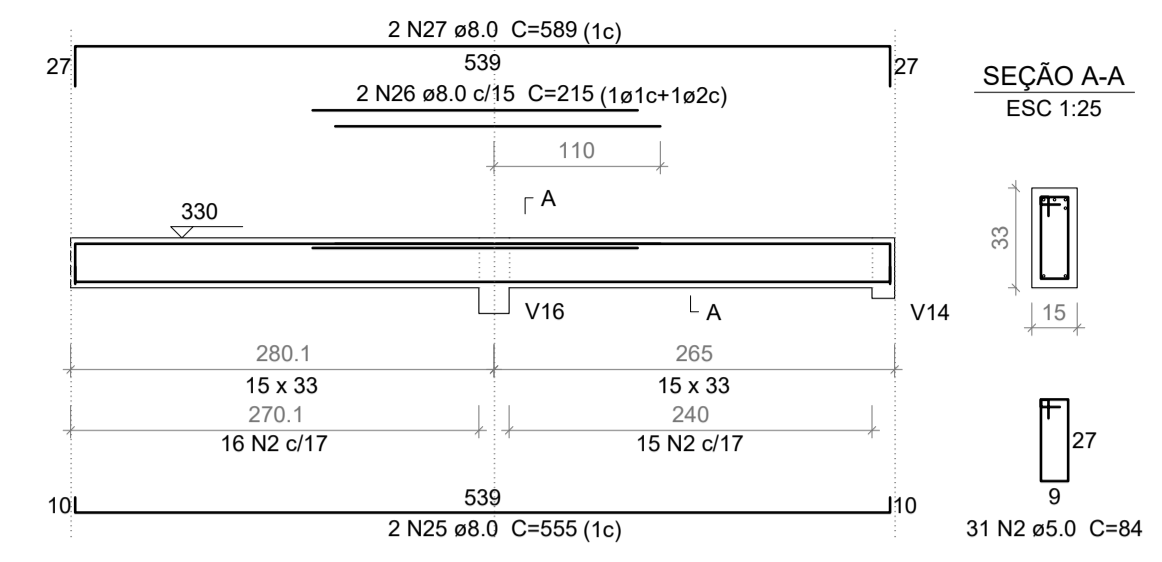
V38
ESC 1:50



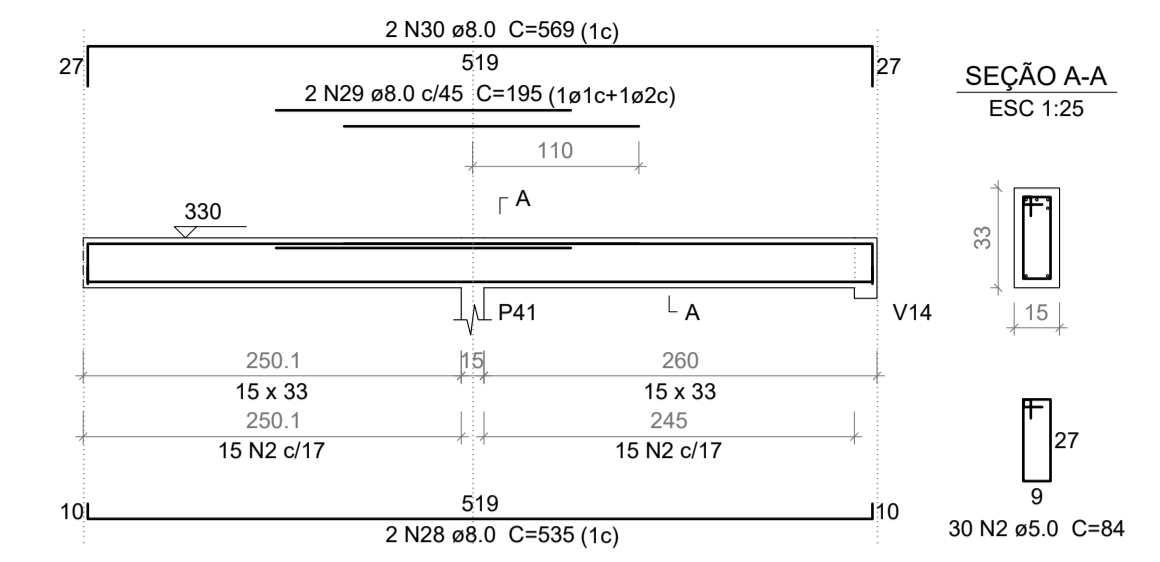
V39
ESC 1:50



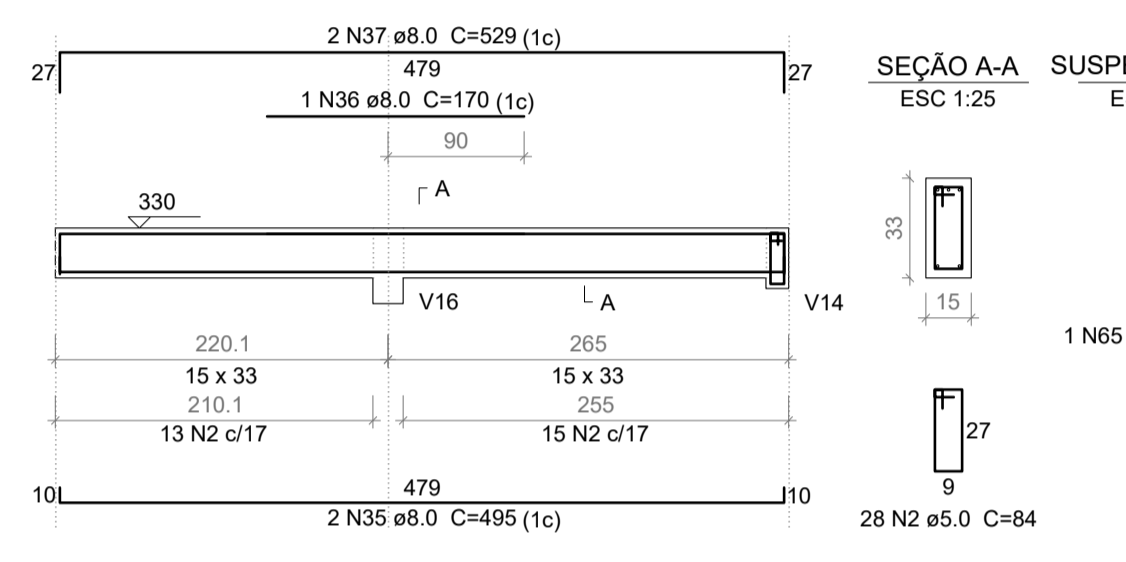
V28
ESC 1:50



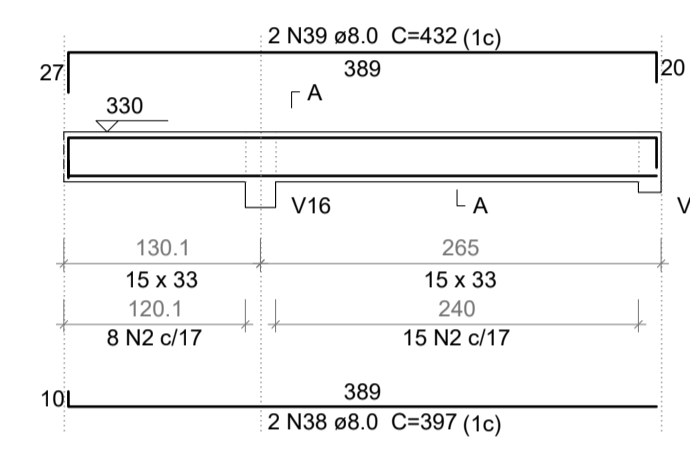
V29
ESC 1:50



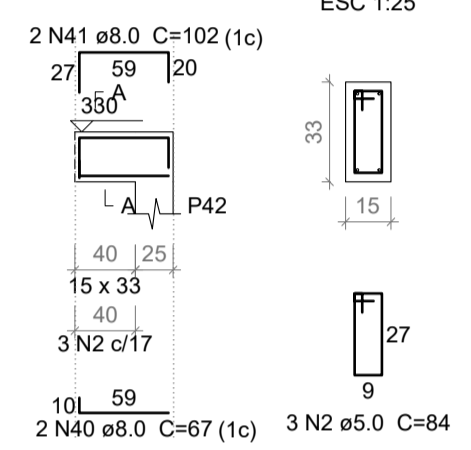
V31
ESC 1:50



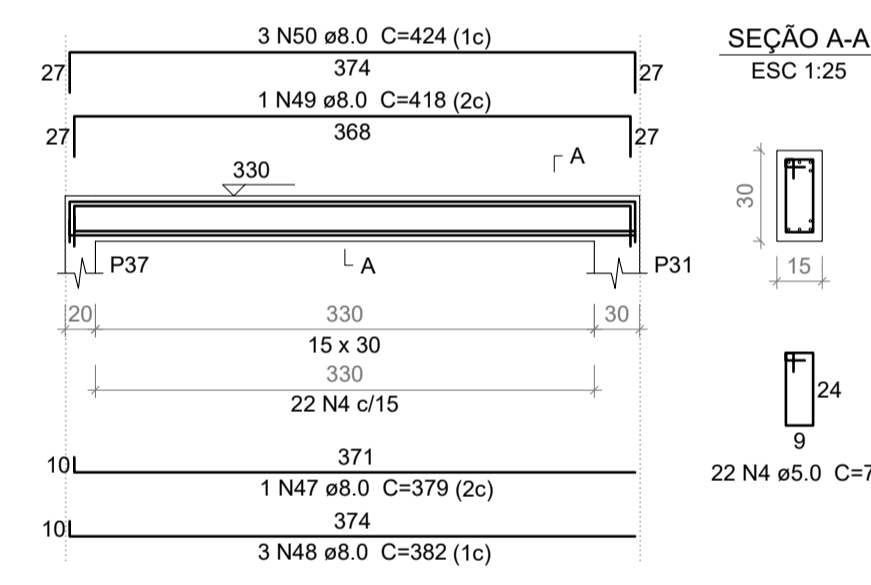
V32
ESC 1:50



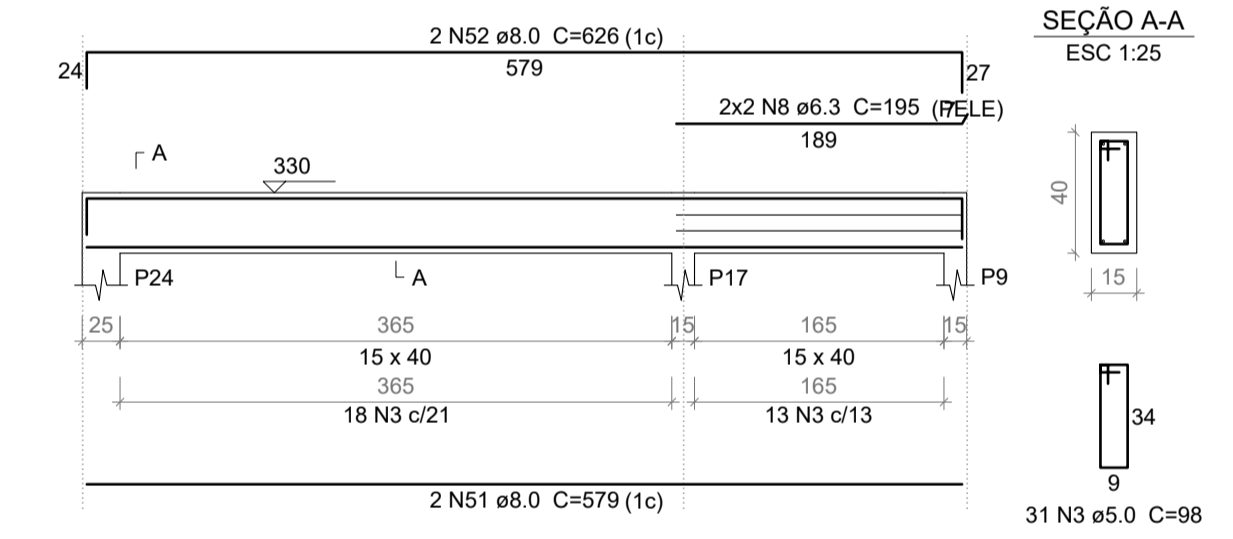
V33
ESC 1:50



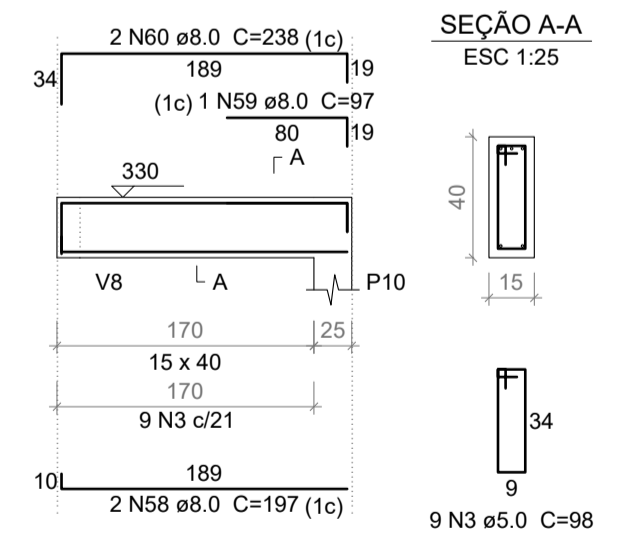
V36
ESC 1:50



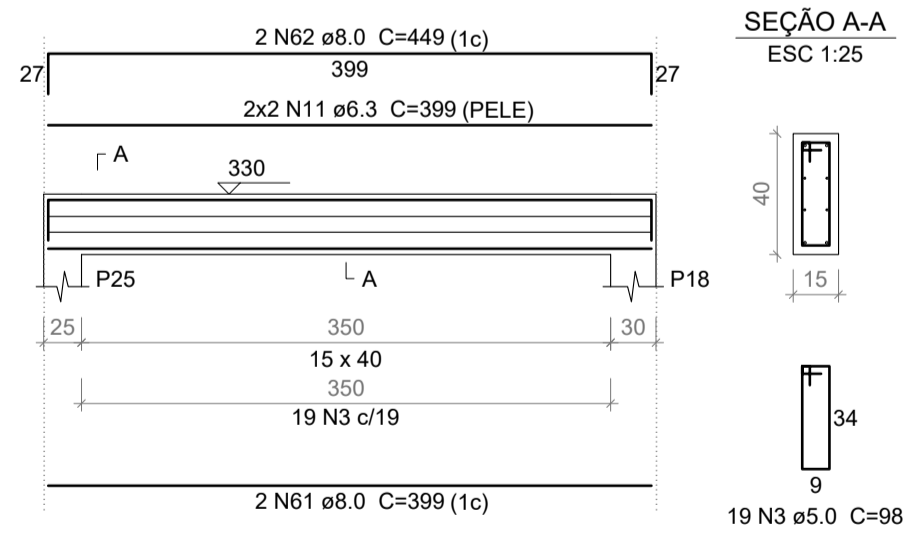
V37
ESC 1:50



V40
ESC 1:50



V41
ESC 1:50



Relação do aço - vigas cobertura

AÇO	N	DIAM (mm)	QUANT	C.UNIT (cm)	C.TOTAL (cm)
CA60	1	5.0	52	108	5616
	2	5.0	115	84	9660
	3	5.0	218	98	21364
	4	5.0	45	78	3510
	5	5.0	16	118	1888
	6	6.3	4	194	776
	7	6.3	1	70	70
	8	6.3	4	195	780
	9	6.3	6	599	3594
	10	6.3	70	118	8260
	11	6.3	4	399	1596
	12	8.0	1	250	250
	13	8.0	1	405	405
	14	8.0	2	700	1400
	15	8.0	3	363	1089
	16	8.0	3	560	1680
	17	8.0	2	245	490
	18	8.0	2	265	530
	19	8.0	1	555	555
	20	8.0	1	575	575
	21	8.0	1	143	143
	22	8.0	1	146	146
	23	8.0	2	1144	2288
	24	8.0	2	198	396
	25	8.0	2	555	1110
	26	8.0	2	215	430
	27	8.0	2	589	1178
	28	8.0	2	535	1070
	29	8.0	2	195	390
	30	8.0	2	569	1138
	31	8.0	2	892	1784
	32	8.0	2	337	674
	33	8.0	1	150	150
	34	8.0	2	753	1506
	35	8.0	2	495	990
	36	8.0	1	170	170
	37	8.0	2	529	1058
	38	8.0	2	397	794
	39	8.0	2	432	864
	40	8.0	2	67	134
	41	8.0	2	102	204
	42	8.0	1	225	225
	43	8.0	2	567	1134
	44	8.0	2	270	540
	45	8.0	2	900	1800
	46	8.0	2	713	1426
	47	8.0	1	379	379
	48	8.0	6	382	2292
	49	8.0	1	418	418
	50	8.0	3	424	1272
	51	8.0	2	579	1158
	52	8.0	2	626	1252
	53	8.0	1	218	218
	54	8.0	1	63	63
	55	8.0	2	230	460
	56	8.0	1	93	93
	57	8.0	3	352	1056
	58	8.0	2	197	394
	59	8.0	1	97	97

Resumo do aço

AÇO	DIAM (mm)	C.TOTAL (m)	PESO * 10 % (kg)
CA50	6.3	150.8	40.6
	8.0	397.8	172.6
	10.0	69.7	47.3
	12.5	8.5	9
	16.0	34	58.9
CA60	5.0	420.4	71.3

PESO TOTAL (kg)
CA50 328.3
CA60 71.3

Volume de concreto (C-30) = 5.56 m³
Área de forma = 86.62 m²

PROJETO ESTRUTURAL



Obra:	POSTO DE SAÚDE SANTA LUZIA Rua Vice Prefeito Pedro Rebeschini, nº 2187 - Abelardo Luz / SC	Data:	04/2021
Resp. Técnico:	Tânia Mara Baldissera - Engenheira Civil - CREA/SC 133.907-5	Escala:	Indicada
Município:	Município de Abelardo Luz - 83.009.886/0001-61	Área:	452,00m²
Especificação:	Vigas pavimento cobertura	Desenho:	Amanda
		Prancha:	ES-11/18