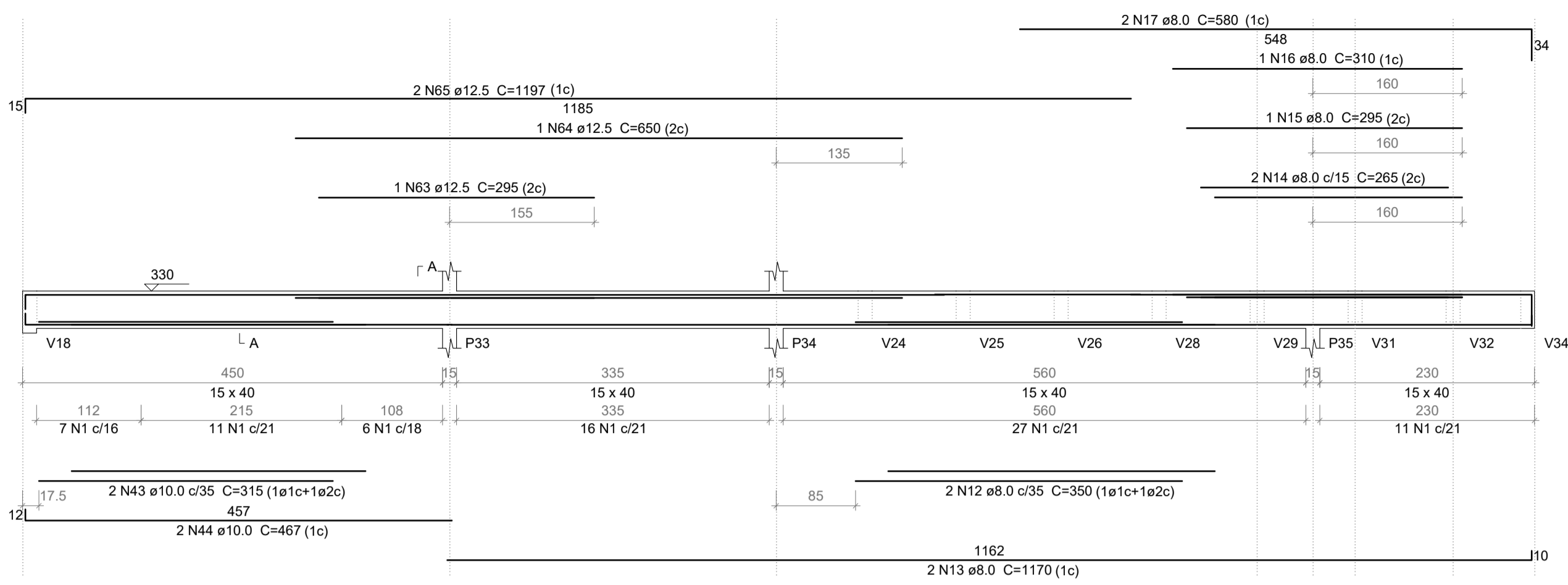
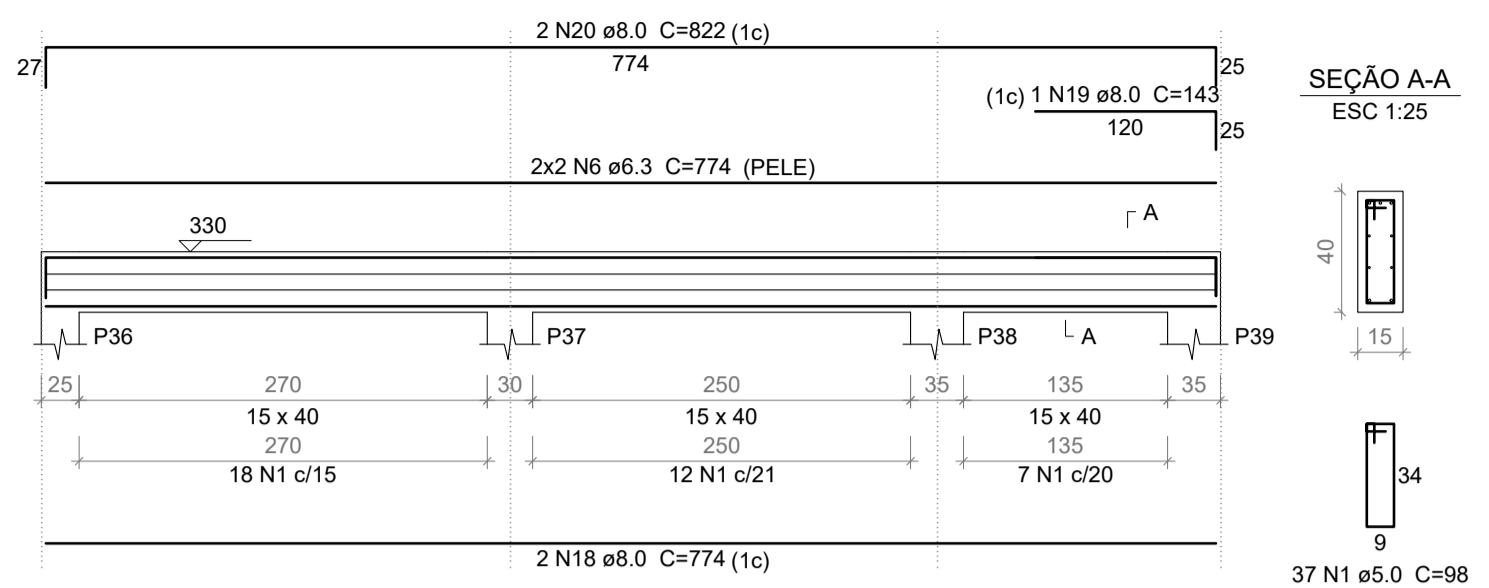


V14
ESC 1:50



V15
ESC 1:50



Relação do aço - vigas cobertura

ACO	N	DIAM (mm)	QUANT	C.UNIT (cm)	C.TOTAL (cm)
CA60	1	5.0	256	98	25088
CA60	2	5.0	53	128	6784
CA60	3	5.0	178	108	19224
CA60	4	5.0	2	240	480
CA60	5	5.0	66	84	7224
CA60	6	6.3	4	774	3096
CA60	7	6.3	6	1196	7176
CA60	8	6.3	6	120	720
CA60	9	6.3	4	127	508
CA60	10	6.3	1	70	70
CA60	11	6.3	6	850	5100
CA60	12	8.0	2	350	700
CA60	13	8.0	2	1170	2340
CA60	14	8.0	2	265	530
CA60	15	8.0	1	295	295
CA60	16	8.0	1	310	310
CA60	17	8.0	2	580	1160
CA60	18	8.0	2	774	1548
CA60	19	8.0	1	143	143
CA60	20	8.0	2	822	1644
CA60	21	8.0	1	437	437
CA60	22	8.0	2	809	1618
CA60	23	8.0	3	358	1074
CA60	24	8.0	3	620	1860
CA60	25	8.0	1	158	158
CA60	26	8.0	2	415	830
CA60	27	8.0	2	622	1244
CA60	28	8.0	2	659	1318
CA60	29	8.0	1	175	175
CA60	30	8.0	2	689	1378
CA60	31	8.0	4	112	448
CA60	32	8.0	2	667	1334
CA60	33	8.0	1	373	373
CA60	34	8.0	2	692	1384
CA60	35	8.0	1	260	260
CA60	36	8.0	2	692	1384
CA60	37	8.0	2	447	894
CA60	38	8.0	2	482	964
CA60	39	8.0	2	499	998
CA60	40	8.0	2	200	400
CA60	41	8.0	2	542	1084
CA60	42	8.0	2	547	1094
CA60	43	10.0	2	315	630
CA60	44	10.0	2	467	934
CA60	45	10.0	3	343	1029
CA60	46	10.0	1	512	512
CA60	47	10.0	2	624	1248
CA60	48	10.0	2	225	450
CA60	49	10.0	2	290	580
CA60	50	10.0	2	355	710
CA60	51	10.0	2	673	1346
CA60	52	10.0	1	540	540
CA60	53	10.0	2	855	1710
CA60	54	10.0	1	389	389
CA60	55	10.0	2	672	1344
CA60	56	10.0	1	255	255
CA60	57	10.0	1	528	528
CA60	58	10.0	1	162	162
CA60	59	10.0	2	1145	2290

ACO	DIAM (mm)	C.TOTAL (m)	PESO + 10% (kg)
CA50	60	10.0	217
CA50	61	10.0	1
CA50	62	10.0	1
CA50	63	12.5	1
CA50	64	12.5	1
CA50	65	12.5	2
CA50	66	12.5	2
CA50	67	12.5	2
CA50	68	16.0	2
CA50	69	16.0	3

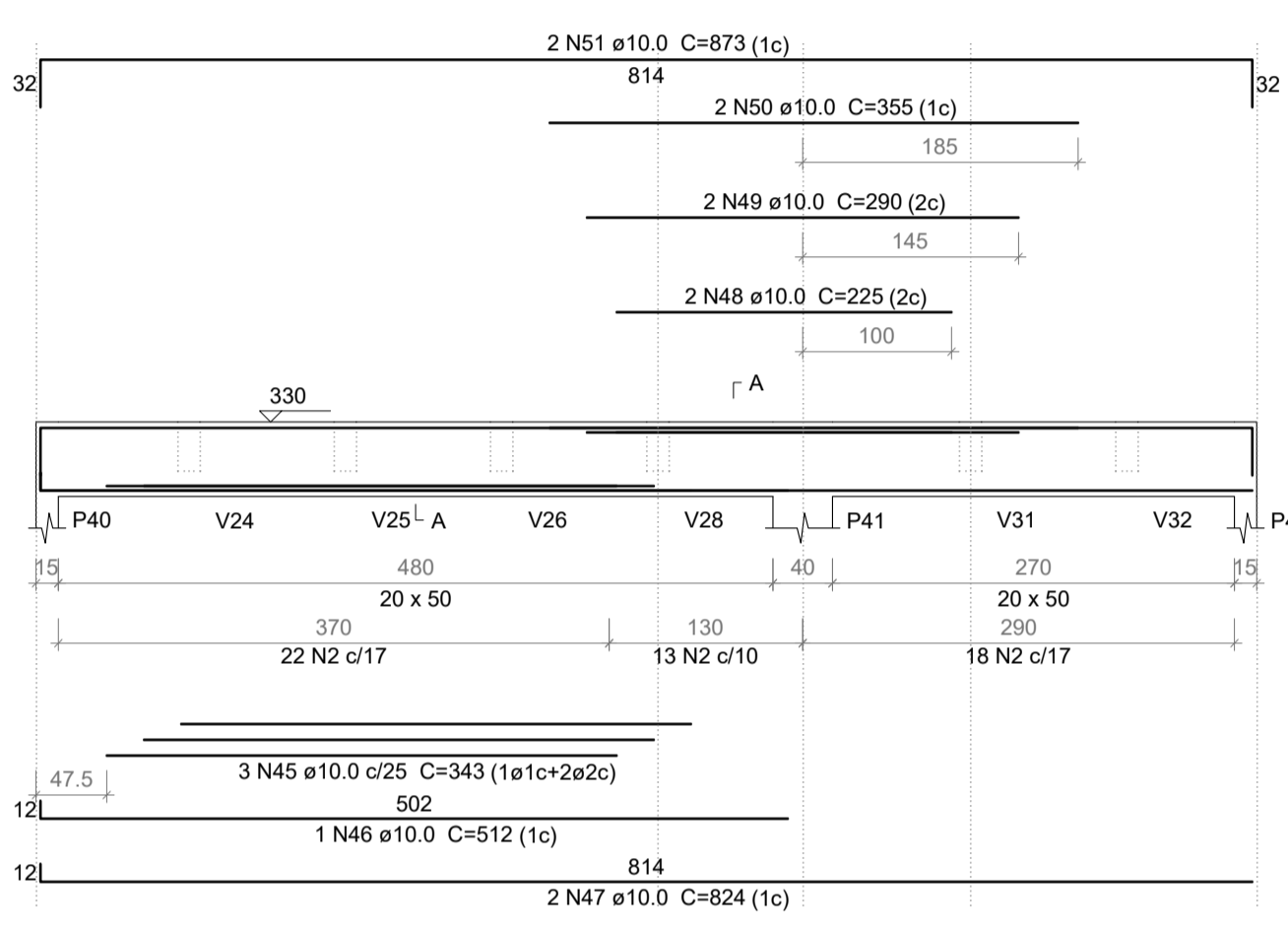
Resumo do aço

ACO	DIAM (mm)	C.TOTAL (m)	PESO + 10% (kg)
CA50	6.3	166.7	44.9
CA50	8.0	293.8	127.5
CA50	10.0	174.7	118.4
CA50	12.5	53.1	56.3
CA50	16.0	40.2	69.6
CA50	5.0	588	99.7

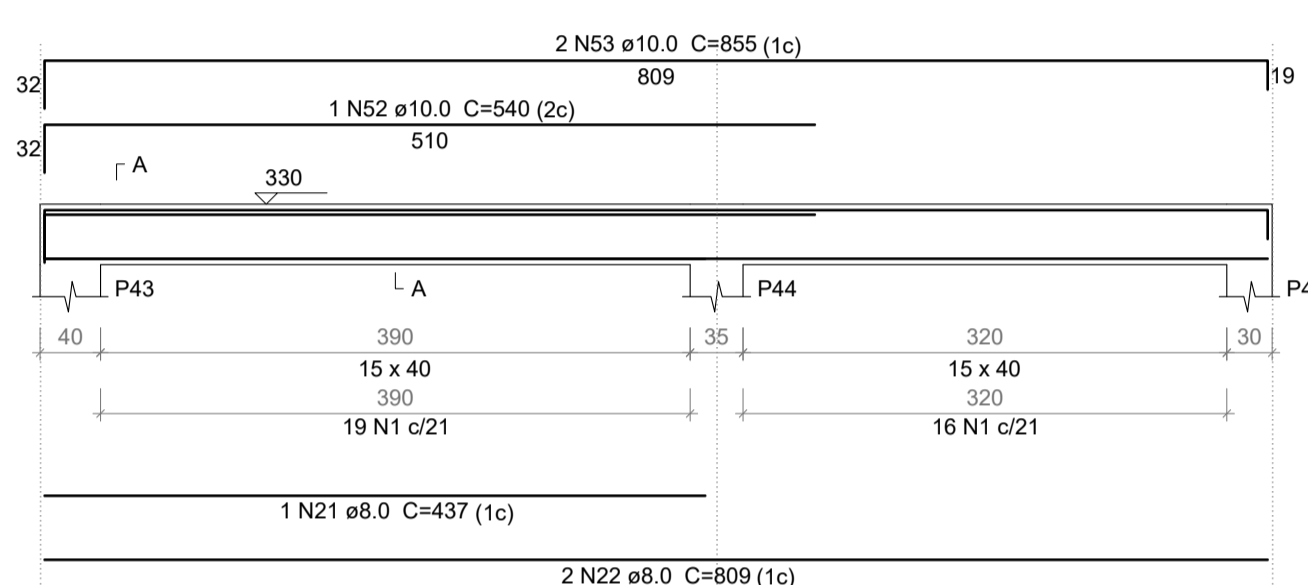
PESO TOTAL (kg)
CA50 416.7
CA60 99.7

Volume de concreto (C-30) = 6.6 m³
Área de forma = 101.22 m²

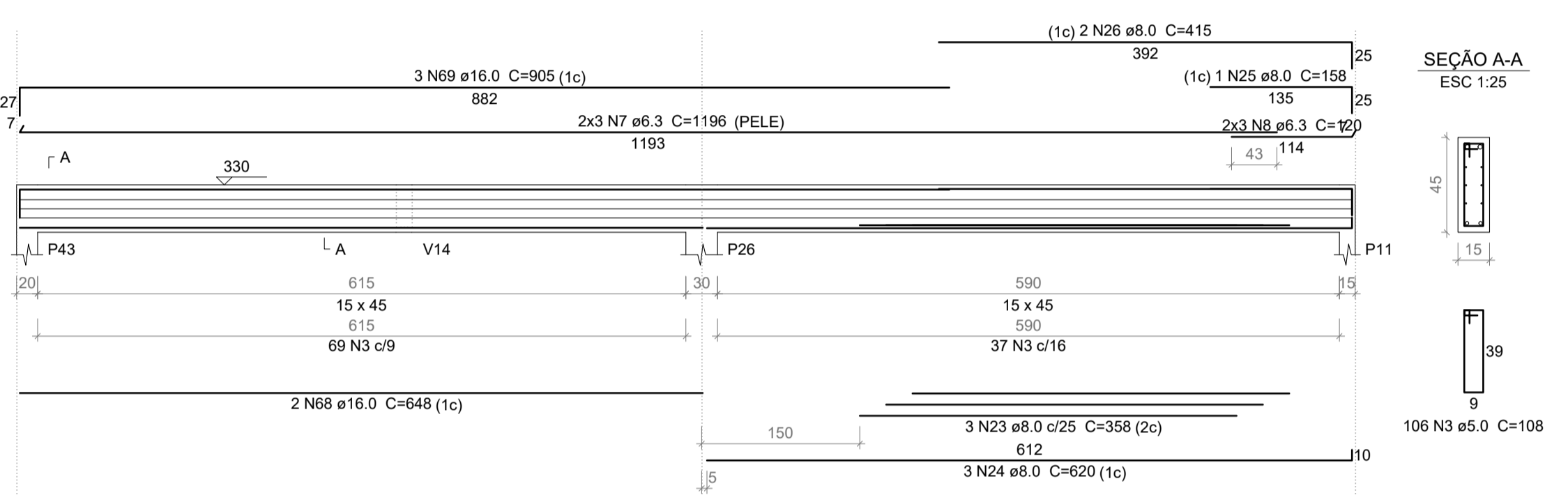
V16
ESC 1:50



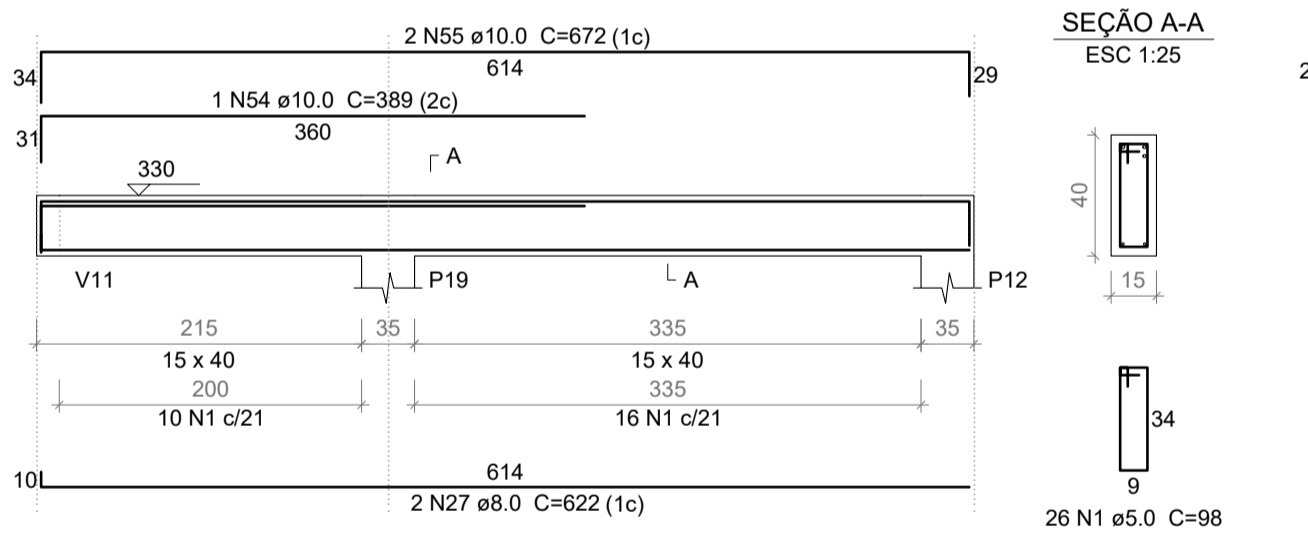
V17
ESC 1:50



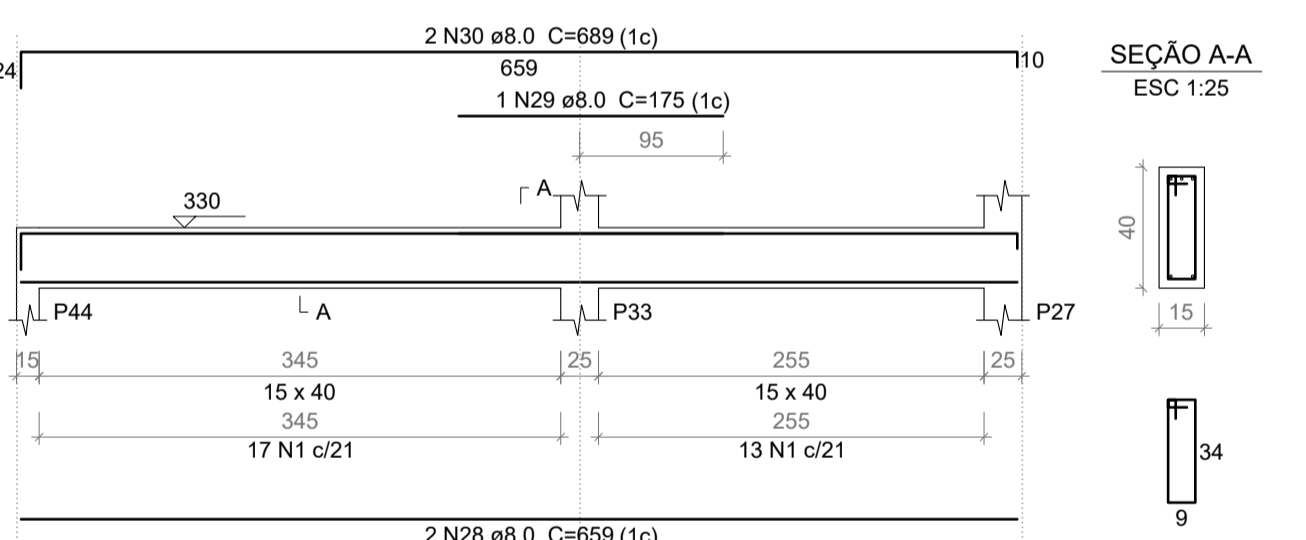
V18
ESC 1:50



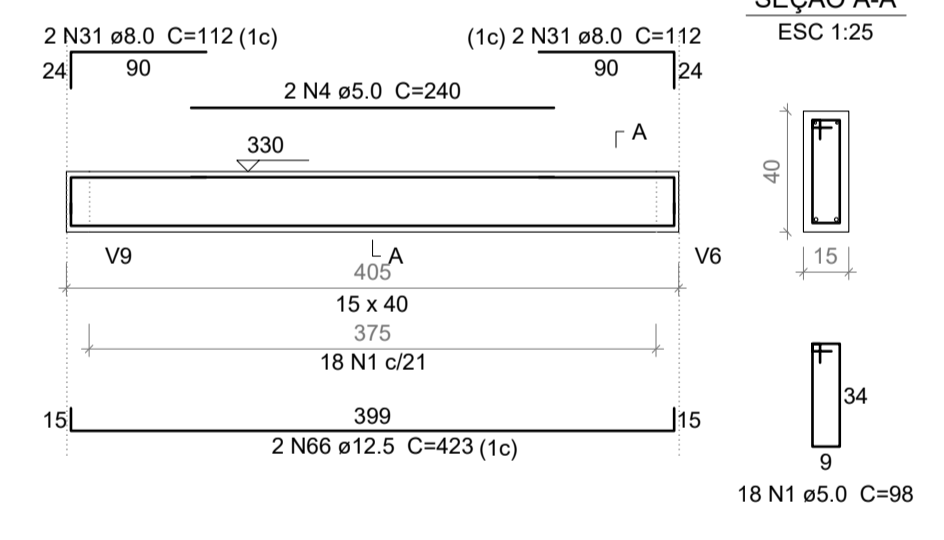
V19
ESC 1:50



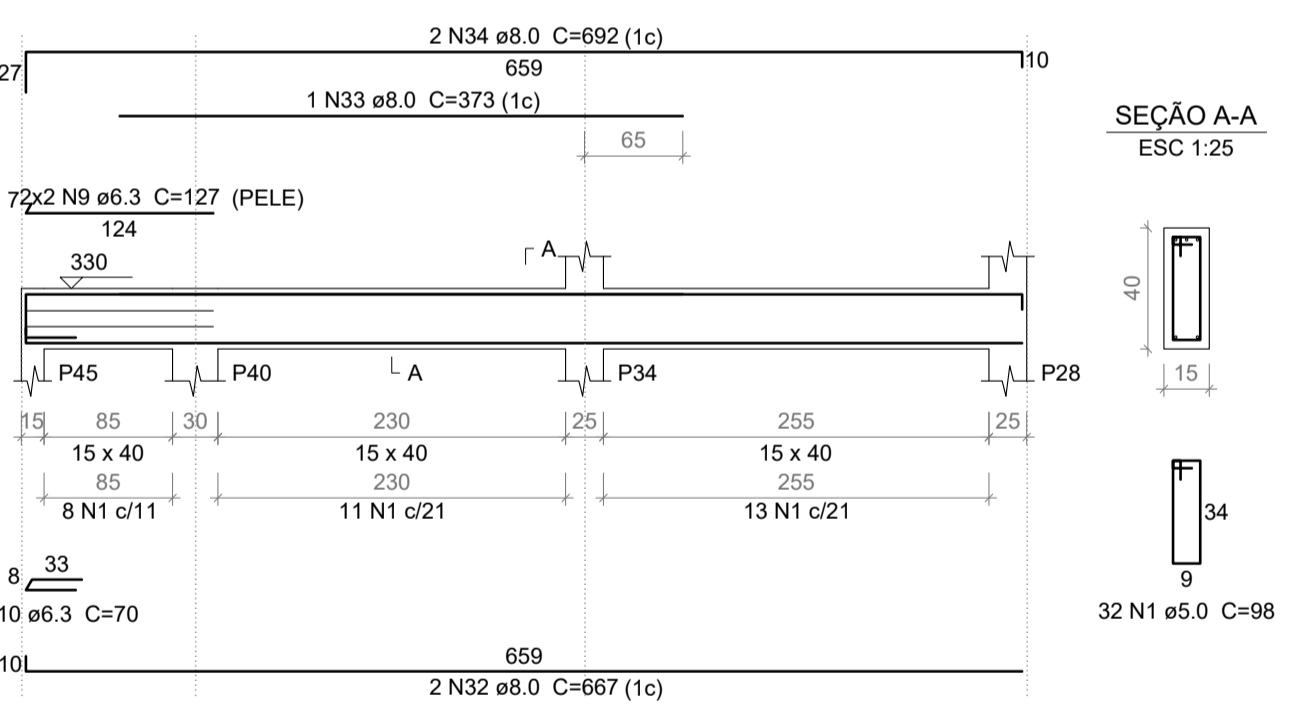
V20
ESC 1:50



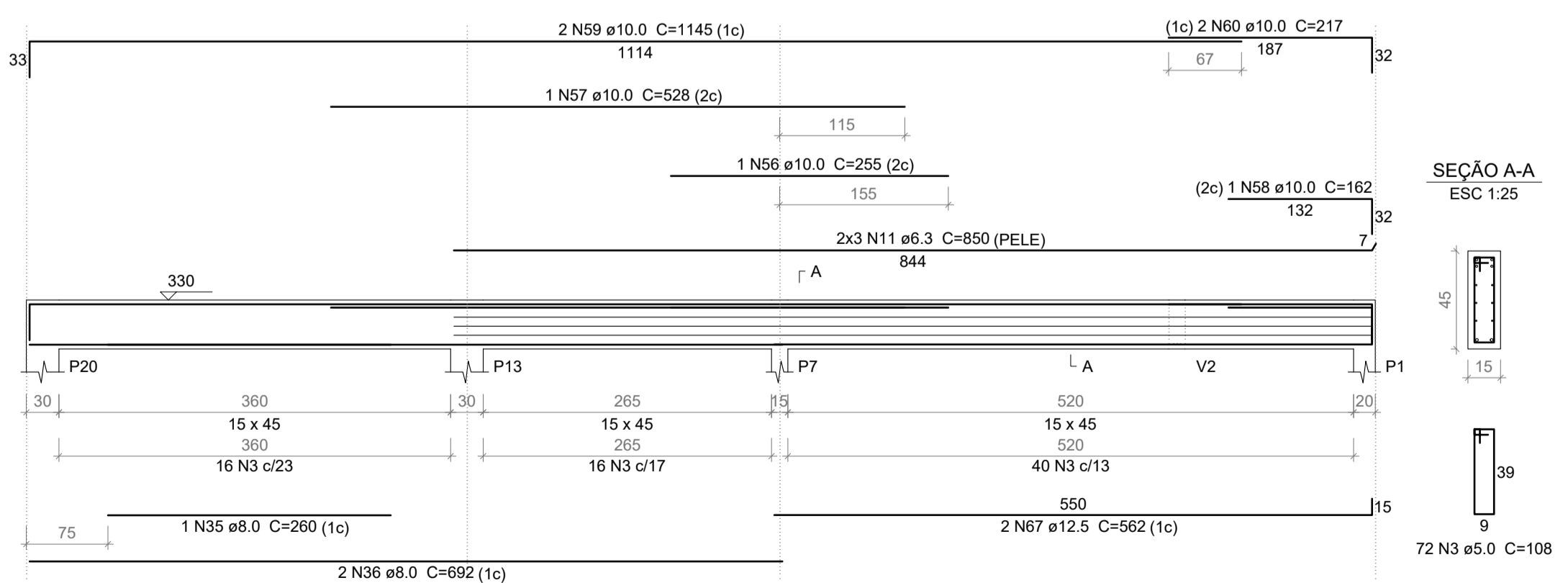
V21
ESC 1:50



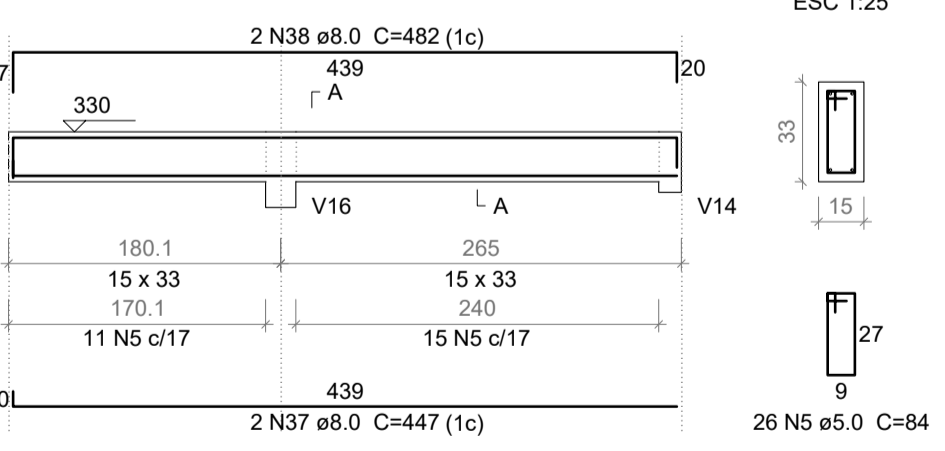
V22
ESC 1:50



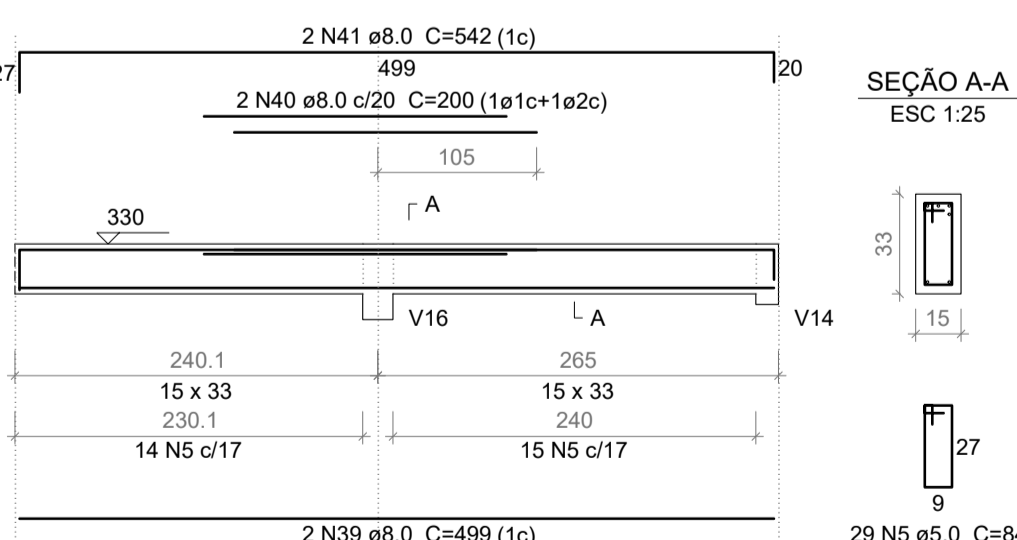
V23
ESC 1:50



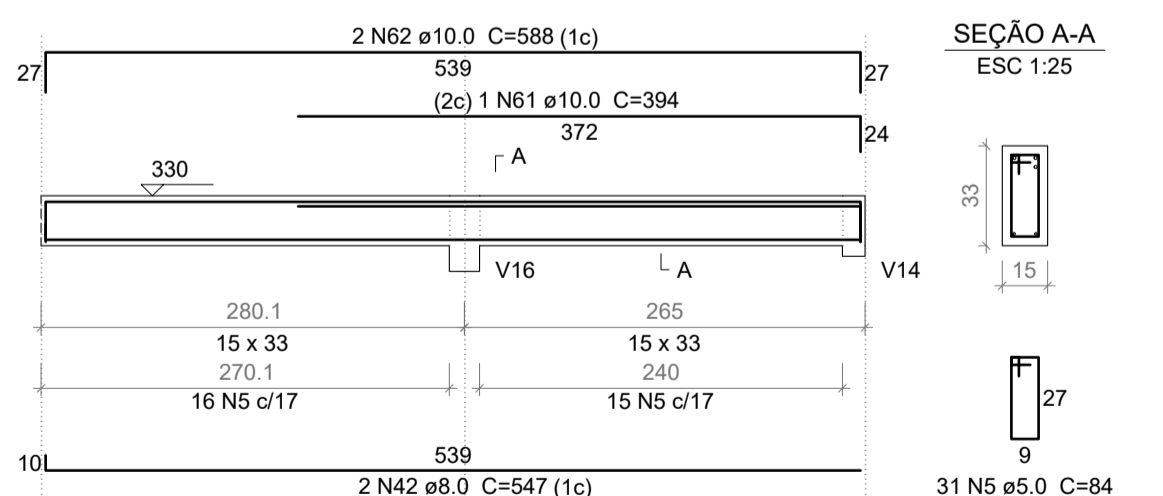
V24
ESC 1:50



V25
ESC 1:50



V26
ESC 1:50



PROJETO ESTRUTURAL



Obra:	POSTO DE SAÚDE SANTA LUZIA Rua Vice Prefeito Pedro Rebeschini, nº 2187 - Abelardo Luz / SC	Data:	04/2021
Resp. Técnico:	Tânia Mara Baldissera - Engenheira Civil - CREA/SC 133.907-5	Escala:	Indicada
Município:	Município de Abelardo Luz - 83.009.886/0001-61	Área:	452,00m²
Especificação:	Vigas pavimento cobertura	Desenho:	Amanda
		Prancha:	ES-10/18