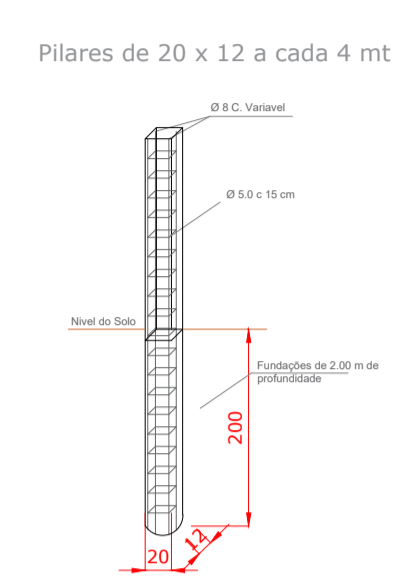
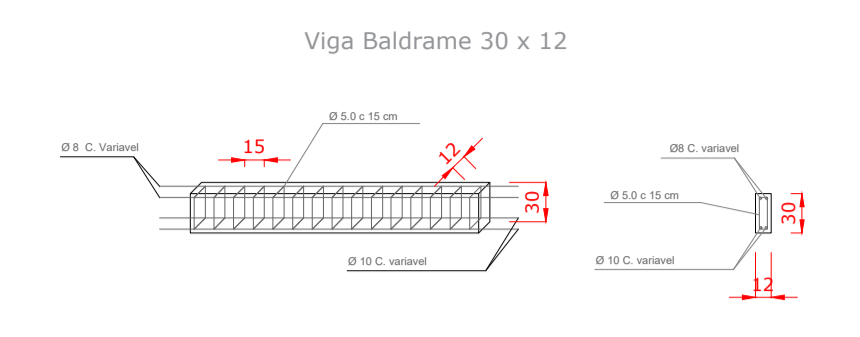
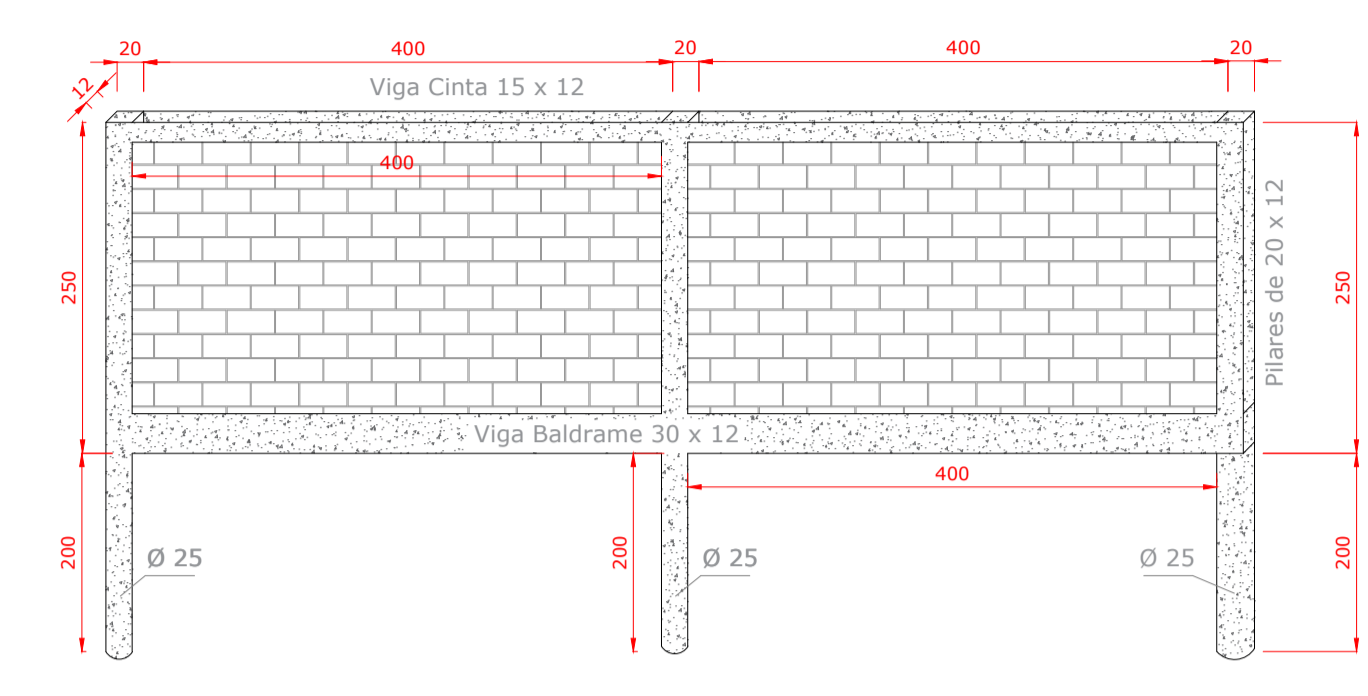
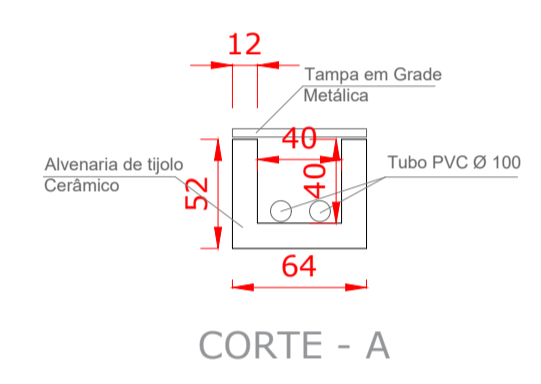


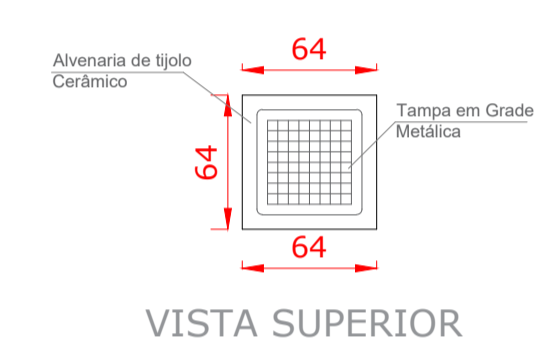
DETALHAMENTO MURO A CONSTRUIR



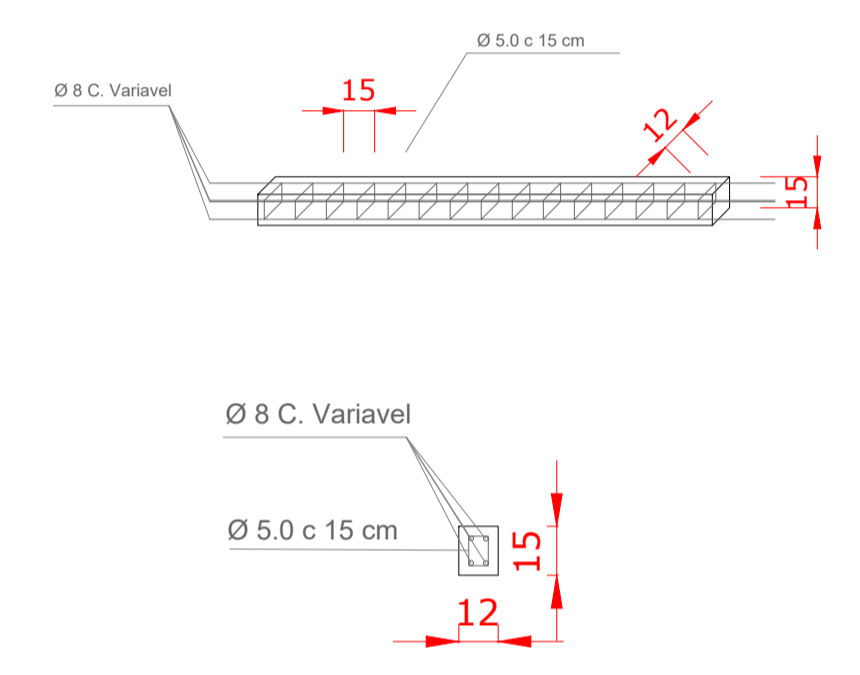
DETALHE - A CAIXAS PLUVIAIS



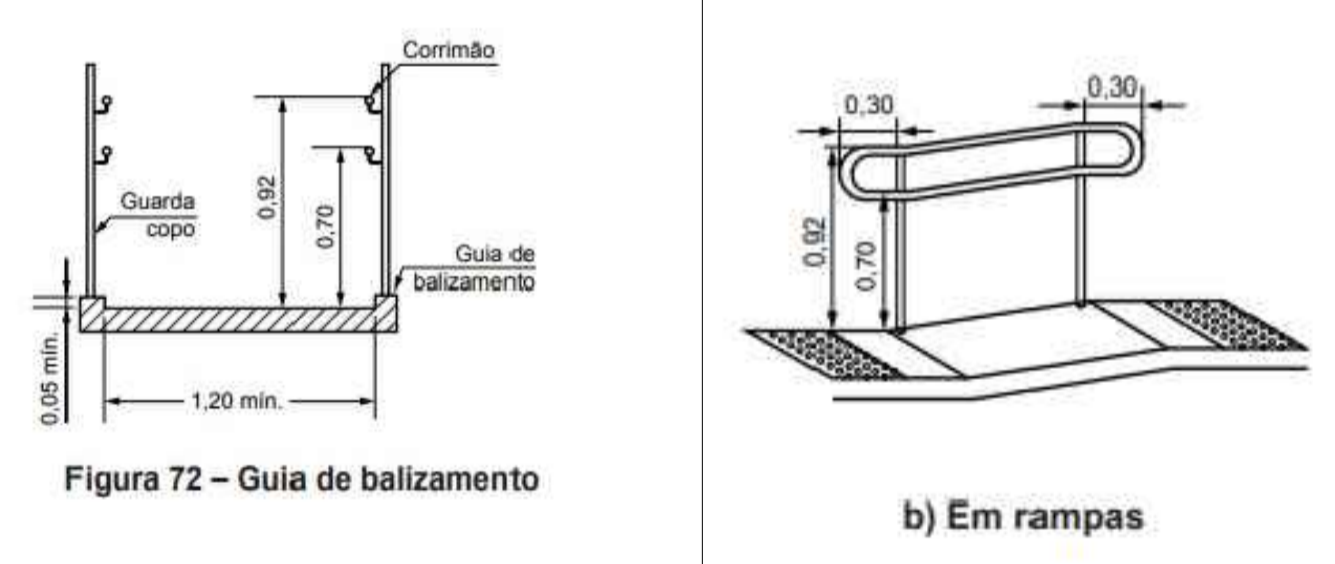
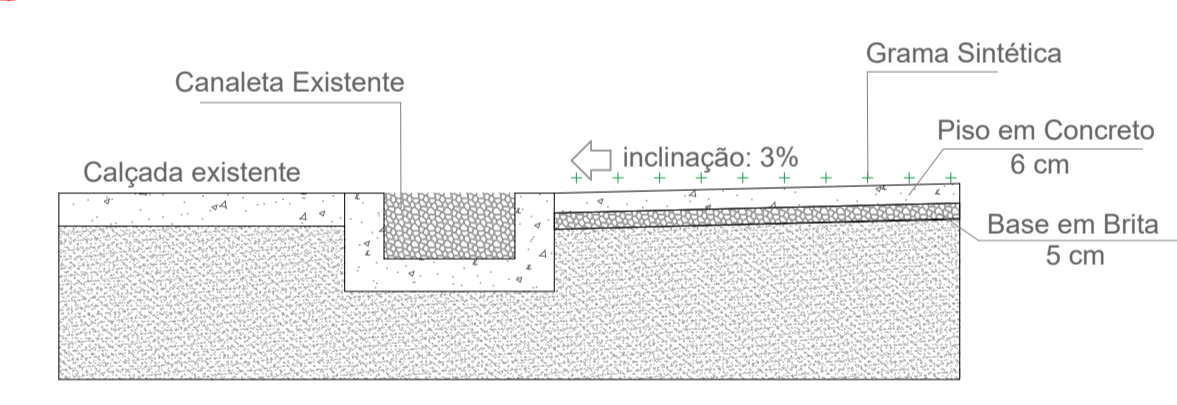
DETALHE - B CAIXAS PLUVIAIS



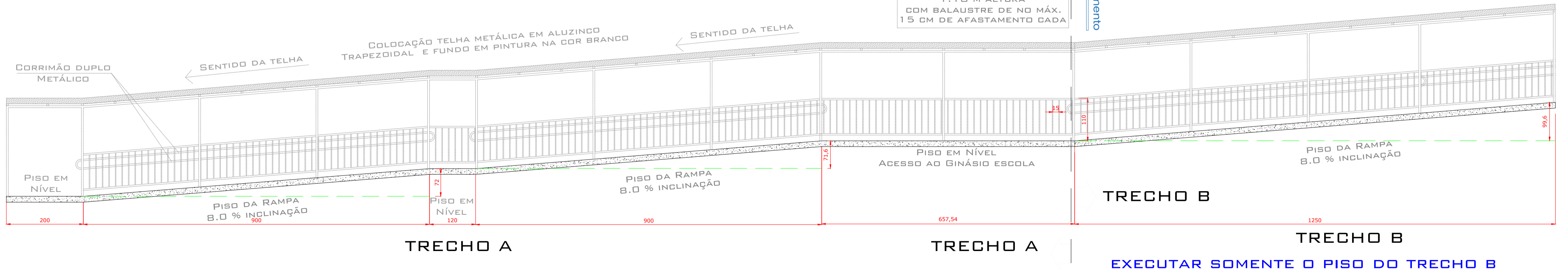
Viga Superior - Cinta 15 x 12



DETALHE - C



GUARDA-CORPO METÁLICO
1,10 M ALTURA
COM BALAUSTRÉ DE NO MÁX.
15 CM DE AFASTAMENTO CADA



PREFEITURA

PROJETO ARQUITETÔNICO
ESCOLA ROMILDO MENEGATTI

CIDADE ABELARDO LUZ ESTADO SANTA CATARINA

RESPONSÁVEL TÉCNICO
ALEXANDRE RICARDO PASSERO CREA 47 604-7

PROPRIETÁRIO
PREFEITURA MUNICIPAL DE ABELARDO LUZ

ASS. RESPONSÁVEL TÉCNICO

CONTEÚDO	ÁREA TOTAL	PRANCHA
REFORMAS ESCOLA ROMILDO MENEGATTI		A
AUTOR DO PROJETO	DATA	ESCALA
	AGOSTO 21	IND.

01