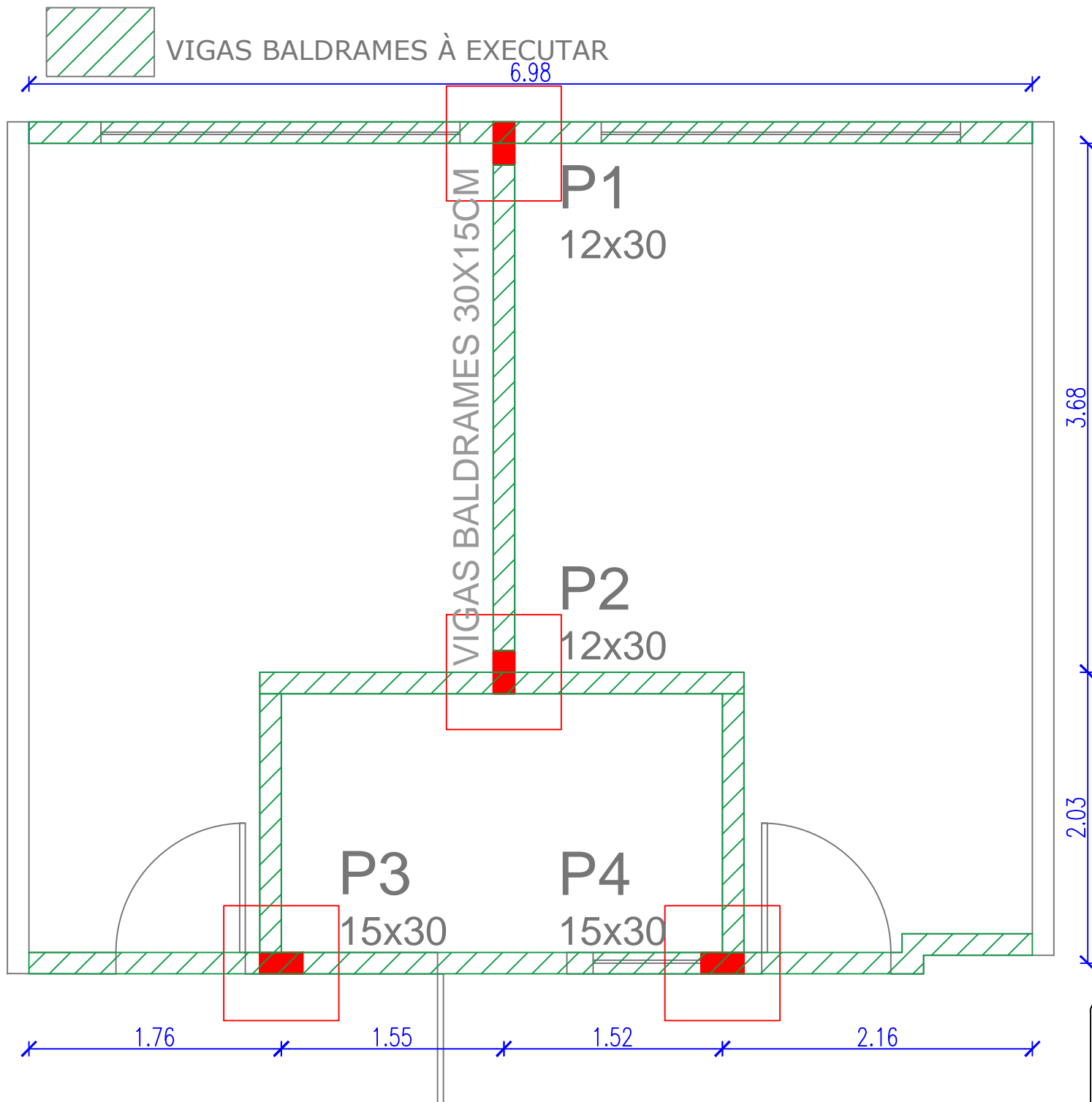
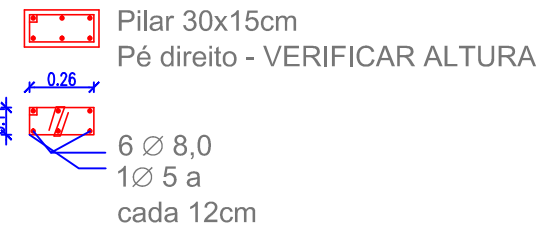


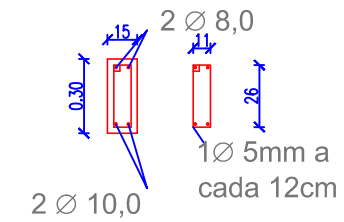
PLANTA BAIXA  
esc. 1/75



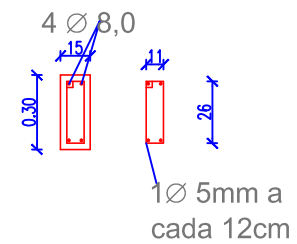
Pilares P1-P4



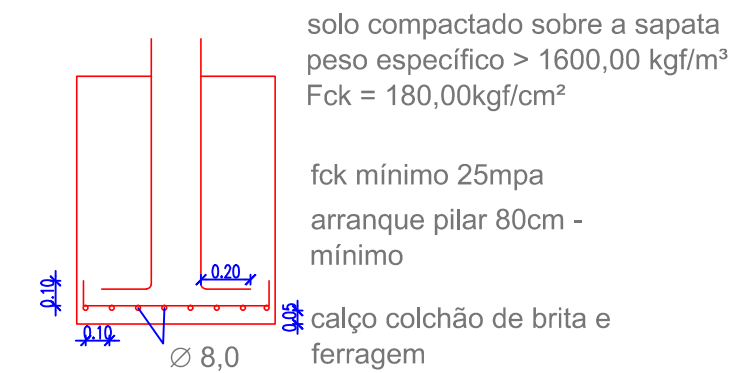
Viga Baldrame 30x15cm



Cinta de amarração 30x15cm



Sapatas 80X80



PROJETO ESTRUTURAL

TITULO  
**REFORMA ESCOLA PROF. ERNESTO SIRINO**

LOCAL  
**VILA ARAÇÁ**

PROPRIETARIO  
**MUNICIPIO DE ABELARDO LUZ**

RESP. TÉCNICO  
**ELIZETE DEMARCO**

PROJETO  
**ELIZETE DEMARCO**

DATA  
**MAR. 2021**

FOLHA  
**01/01**